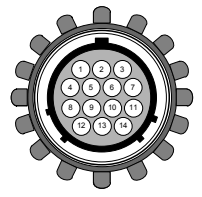


REVISION HISTORY				
LEVEL	DESCRIPTION	DATE	DRN	APP
0	Release	1/05/2013	FD	
1a	Correction to cut sheet to match update sheet	1/22/2013	FD	
1b	C4 gender changes and +12v GND added	6/06/2013	FD	



GSM MOTOR ENCLOSURE CONNECTOR FRONT VIEW

C2

QTY	DESCRIPTION	PCS P/N	NOTES
1	CONNECTOR		TYCO AMP 796271-1
9	TERMINALS		20 awg male
2	TERMINALS		16 awg male
1	Backshell		size 17

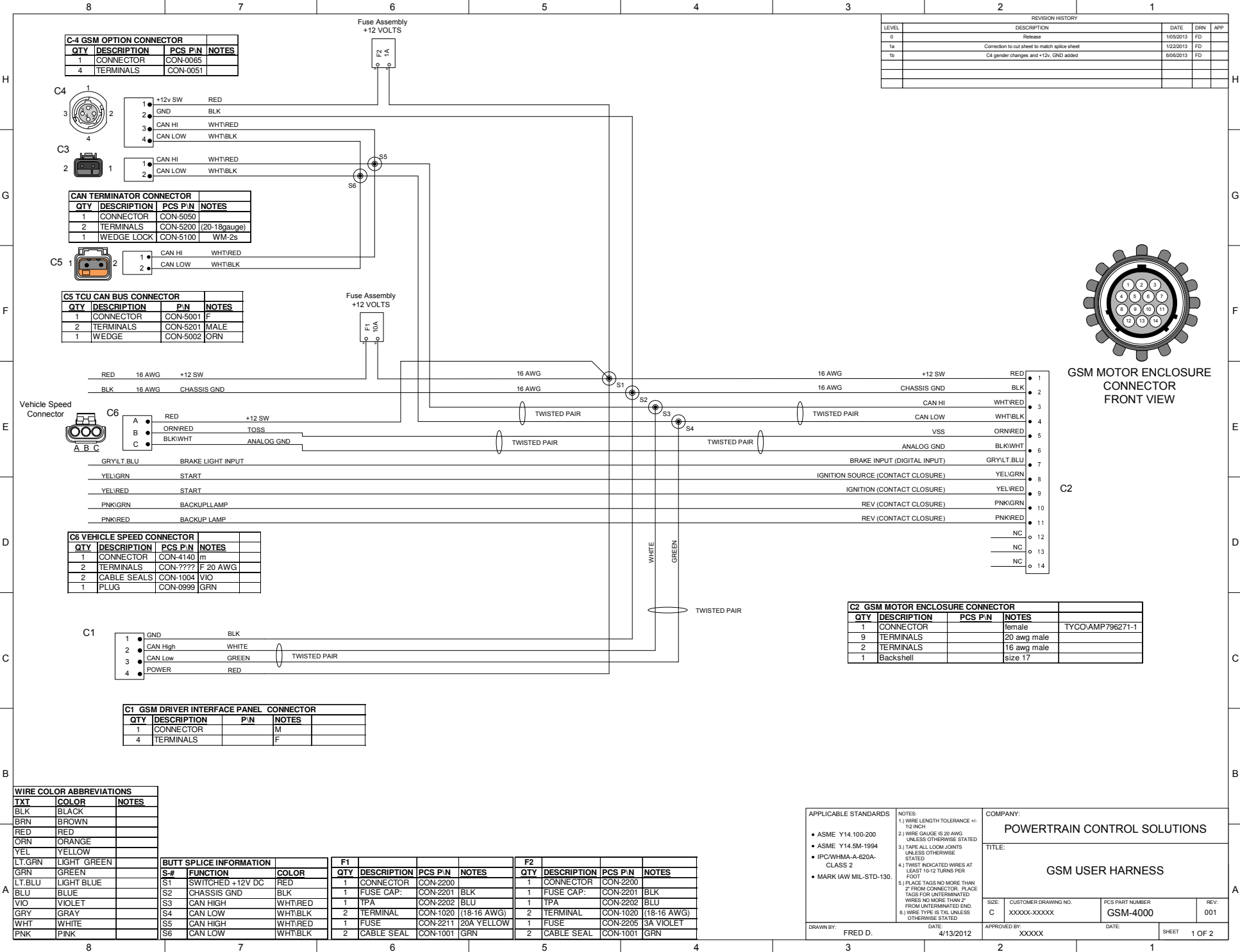
COMPANY: <b>POWERTRAIN CONTROL SOLUTIONS</b>			
TITLE: <b>GSM USER HARNESS</b>			
SIZE: C	CUSTOMER DRAWING NO: XXXXXX-XXXXX	PCS PART NUMBER <b>GSM-4000</b>	REV: 001
DRAWN BY: FRED D.		DATE: 4/13/2012	
APPROVED BY: XXXXXX		DATE: XXXXXX	
SHEET		1 OF 2	

APPLICABLE STANDARDS <ul style="list-style-type: none"> <li>ASME Y14.100-200</li> <li>ASME Y14.5M-1994</li> <li>IPC/WHMA-A-620A-CLASS 2</li> <li>MARK IAW MIL-STD-130.</li> </ul>	NOTES 1.) WIRE LENGTH TOLERANCE +/- 1/2 INCH 2.) WIRE GAUGE IS 20 AWG UNLESS OTHERWISE STATED 3.) TAPE ALL LOOM JOINTS UNLESS OTHERWISE STATED 4.) TWIST INDICATED WIRES AT LEAST 10-12 TURNS PER FOOT 5.) PLACE TAGS NO MORE THAN 2" FROM CONNECTOR. PLACE TAGS FOR UNTERMINATED WIRES NO MORE THAN 2" FROM UNTERMINATED END. 6.) WIRE TYPE IS TXL UNLESS OTHERWISE STATED
--	---

F1	QTY	DESCRIPTION	PCS P/N	NOTES	F2	QTY	DESCRIPTION	PCS P/N	NOTES
	1	CONNECTOR	CON-2200			1	CONNECTOR	CON-2200	
	1	FUSE CAP:	CON-2201	BLK		1	FUSE CAP:	CON-2201	BLK
	1	TPA	CON-2202	BLU		1	TPA	CON-2202	BLU
	2	TERMINAL	CON-1020	(18-16 AWG)		2	TERMINAL	CON-1020	(18-16 AWG)
	1	FUSE	CON-2211	20A YELLOW		1	FUSE	CON-2205	3A VIOLET
	2	CABLE SEAL	CON-1001	GRN		2	CABLE SEAL	CON-1001	GRN

S-#	FUNCTION	COLOR
S1	SWITCHED +12V DC	RED
S2	CHASSIS GND	BLK
S3	CAN HIGH	WHT/RED
S4	CAN LOW	WHT/BLK
S5	CAN HIGH	WHT/RED
S6	CAN LOW	WHT/BLK

TXT	COLOR	NOTES
BLK	BLACK	
BRN	BROWN	
RED	RED	
ORN	ORANGE	
YEL	YELLOW	
LT.GRN	LIGHT GREEN	
GRN	GREEN	
LT.BLU	LIGHT BLUE	
BLU	BLUE	
VIO	VIOLET	
GRY	GRAY	
WHT	WHITE	
PNK	PINK	



QTY	DESCRIPTION	PCS P/N	NOTES
1	CONNECTOR	CON-0065	
4	TERMINALS	CON-0051	

QTY	DESCRIPTION	PCS P/N	NOTES
1	CONNECTOR	CON-5050	
2	TERMINALS	CON-5200 (20-18gauge)	
1	WEDGE LOCK	CON-5100	WM-2s

QTY	DESCRIPTION	P/N	NOTES
1	CONNECTOR	CON-5001	F
2	TERMINALS	CON-5201	MALE
1	WEDGE	CON-5002	ORN

QTY	DESCRIPTION	PCS P/N	NOTES
1	CONNECTOR	CON-4140	m
2	TERMINALS	CON-????	F 20 AWG
2	CABLE SEALS	CON-1004	VIO
1	PLUG	CON-0999	GRN

QTY	DESCRIPTION	P/N	NOTES
1	CONNECTOR		M
4	TERMINALS		F

UNTERMINATED			
CIRCUIT FUNCTION	COLOR	CONNECTS TO	
START	YEL/GRN	C2-8	
START	YEL/RED	C2-9	
BACKUP	PNK/GRN	C2-10	
BACKUP	PNK/RED	C2-11	
BRAKE LIGHT	GRY/LT.BLU	C2-7	

UNTERMINATED POWER			
CIRCUIT FUNCTION	COLOR	CONNECTS TO	
SW +12V	RED	C2-1	
CHASSIS GND	BLACK	C2-2	

C3 CAN TERMINATOR CONNECTOR/CAN			
PIN	CIRCUIT FUNCTION	COLOR	TCU POS.
1	CAN HIGH	WHT/RED	S5
2	CAN LOW	WHT/BLK	S6

Connects to CAN Terminator

C4 GSM OPTION CONNECTOR			
PIN	CIRCUIT FUNCTION	COLOR	TCU POS.
1	+12V SW	RED	F2a
2	GND	BLK	S2
3	CAN HIGH	WHT/RED	S5
4	CAN LOW	WHT/BLK	S6

C5 TCU CAN BUS CONNECTOR			
PIN	CIRCUIT FUNCTION	COLOR	CONNECTS TO
1	CAN HIGH	WHT/RED	S5
2	CAN LOW	WHT/BLK	S6

Connects to TCU Harness

C6 VEHICLE SPEED CONNECTOR			
PIN	CIRCUIT FUNCTION	COLOR	C2 POS.
A	SW +12V	RED	C2-1
B	OUTPUT SHAFT SPEED SENSOR	ORN/RED	C2-5
C	OUTPUT SHAFT SPEED SENSOR GND	BLK/WHT	C2-6

C1 GSM DRIVER INTERFACE PANEL CONNECTOR				
PIN	CIRCUIT FUNCTION	COLOR	GSM CONN.	
1	GND.	BLK	C2 PIN-2	
2	CAN HIGH	WHITE	C2 PIN-3	
3	CAN LOW	GREEN	C2 PIN-4	
4	POWER	RED	C2 PIN-1	

C2 GSM MOTOR ENCLOSURE CONNECTOR			
PIN	CIRCUIT FUNCTION	COLOR	CONNECTS TO
1	+12 SW	RED	S1, F1-B, C1-1
2	GND	BLK	S2, C1-2 UNTERM
3	CAN HIGH	WHT/RED	S3, S5, C3-1, C4-3
4	CAN LOW	WHT/BLK	S4, S6, C3-2, C4-4
5	VSS	ORN/RED	UNTERM
6	ANALOG GND	GRY/LT.BLU	UNTERM
7	BRAKE INPUT	YEL/LT.GRN	UNTERM
8	START	YEL/RED	UNTERM
9	START	PNK/LT.GRN	UNTERM
10	BACKUP LAMP	PNK/LT.GRN	UNTERM
11	BACKUP LAMP	PNK/RED	UNTERM
12	NC	NC	NC
13	NC	NC	NC
14	NC	NC	NC

BUTT SPLICE INFORMATION		
S-#	FUNCTION	COLOR
S1	SWITCHED +12V DC	RED
S2	CHASSIS GND	BLK
S3	CAN HIGH	WHT/RED
S4	CAN LOW	WHT/BLK
S5	CAN HIGH	WHT/RED
S6	CAN LOW	WHT/BLK

LABEL DEFINITION TABLE			
NUM	NAME	PCS P/N	NOTES
L1	GSM Cable Motor Enclosure	WRE-8501	
L2	GSM Driver Interface Panel	WRE-8500	
L3	Switched +12V DC	WRE-8500	
L4	CHASSIS GND	WRE-8500	
L5	BRAKE LAMP INPUT	WRE-8500	
L6	START	WRE-8500	
L7	START	WRE-8500	
L8	BACKUP LIGHT	WRE-8500	
L9	BACKUP LIGHT	WRE-8500	
L10	CAN BUS TERMINATOR	WRE-8500	
L11	GSM OPTION CONNECTOR	WRE-8500	
L12	TCU CAN BUS	WRE-8500	
L13	VEHICLE SPEED	WRE-8500	

- APPLICABLE STANDARDS
- ASME Y14.100-200
  - ASME Y14.5M-1994
  - IPC/WHMA A-620A-CLASS 2
  - MARK IAW MIL-STD-130

- NOTES:
- 1) WIRE LENGTH TOLERANCE +/- 12 INCH
  - 2) WIRE GAUGE IS 20 AWG UNLESS OTHERWISE STATED
  - 3) TAPE ALL LOCK JOINTS UNLESS OTHERWISE STATED
  - 4) TWIST INDICATED WIRES AT LEAST 10-12 TURNS PER FOOT
  - 5) PLACE TAGS NO MORE THAN 2" FROM CONNECTOR. PLACE TAGS FOR UNTERMINATED WIRES NO MORE THAN 2" FROM UNTERMINATED END.
  - 6) WIRE TYPE IS TXL UNLESS OTHERWISE STATED.

COMPANY: <b>POWERTRAIN CONTROL SOLUTIONS</b>			
TITLE: <b>GSM USER HARNESS</b>			
SIZE: C	CUSTOMER DRAWING NO. XXXXX-XXXXX	PCS PART NUMBER <b>GSM-4000</b>	REV: 001
DRAWN BY: FRED D.		DATE: 4/13/2012	APPROVED BY: XXXXX
		DATE:	SHEET 1 OF 2